

Project Team



Alys Young
Professor of Social Work,
The University of Manchester



Emma Ferguson Coleman
Research Assistant
The University of Manchester



Katie Rogers
NIHR Doctoral Research Fellow,
The University of Manchester



John Keady
Professor of Older People's Mental
Health Nursing,
The University of Manchester



Alistair Burns
Professor of Old Age Psychiatry
The University of Manchester



Tanya Denmark
Research Fellow,
DCAL, UCL



Jo Atkinson
Clinical Research Psychologist,
DCAL, UCL



Bencie Woll
Professor of Sign Language and
Director of Deafness, Cognition
and Language Centre (DCAL),
University College London (UCL)



Jane Marshall
Professor of Aphasia,
City University, London



Ruth Geall
Head of Social Care,
*Royal Association for Deaf People
(RAD)*



Please contact us at:

For further information about the Deaf with Dementia Project, please contact:

✉ **Deaf with Dementia Project:**
The School of Nursing, Midwifery and
Social Work, The University of Manchester,
Room 4.313, Jean McFarlane Building,
University Place, Oxford Road,
Manchester M13 9PL

@ **Email: dwd@manchester.ac.uk**
SMS: 07500 126219

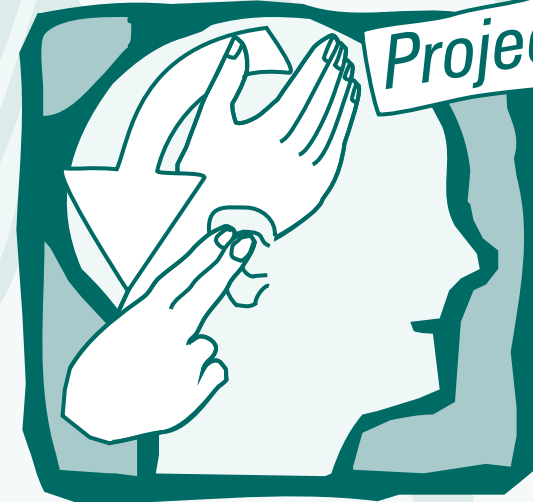
For more information, look at our website at...
www.manchester.ac.uk/deafwithdementia

The Deaf with Dementia Project is a three year project funded by the Alzheimer's Society QRD Programme. It is a partnership between The University of Manchester, DCAL UCL, City University and RAD.



Designed and illustrated by The Attic Design Studio
Email: atticdesign@02.co.uk

DEAF^{with} DEMENTIA Project



What happens when
a Deaf person
has Dementia?



Our Project

Dementia describes a number of different diseases. These all reduce the functioning of the brain and get worse over time.

Dementia affects memory, attention, language and the person's ability to solve problems. Behaviour can also change.



The most common type of dementia is Alzheimer's Disease. This usually affects older people, but can also happen in middle age.



We aim to

Study one:

Understand more about ageing in healthy Deaf people. We will use this knowledge to develop assessments to help identify dementia in Deaf BSL users.



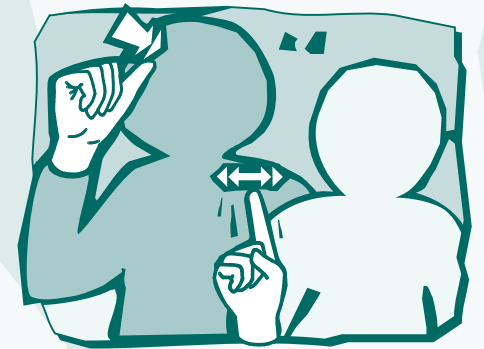
Study two:

Interview Deaf people with dementia and their carers to understand their experiences.



Study three:

Conduct focus groups to find out: 'What do Deaf people know about dementia?'



Are you... ?

■ A Deaf person with dementia

■ A family member or friend

■ A professional

We would like to hear from you!